

Radar & Software Requirements

IR2

Higher Resolution... Greater Confidence™



Nobeltec® InSight™ Radar2 (IR2)



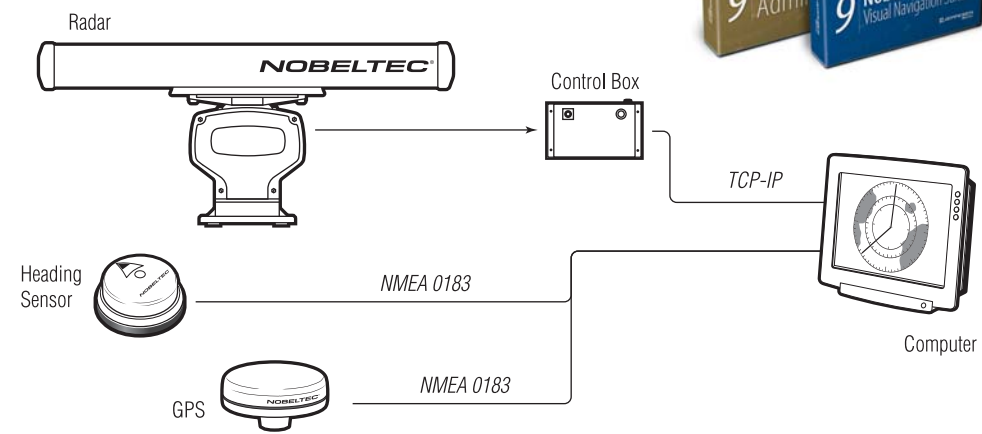
- Radar Overlay Capabilities
-
- Easily Adjustable Radar Settings
-
- View As A Stand-Alone Radar
-
- 1024 x 1024 Radar Resolution
-
- Radar Interpretation Made Easier
-
- Choose from a 2 kW 16 Mile Radome
to a 25 kW 96 Mile Open Array

Nobeltec Product	Part #
Nobeltec InSight Radar 2 (IR2)	See Inside
<small>For current pricing check www.nobeltec.com</small>	

Specifications

InSight™ Radar 2 (IR2)
IR2 is a fully functional digital radar that interfaces with VNS and Admiral for integration with a laptop or desktop computer. Each radar connects directly to your computer and sends a video image, processed by revolutionary InSight Technology for a cleaner picture. There are numerous display settings to choose from including a dedicated radar display, a split screen with radar and chart in separate windows or radar overlaid on top of your electronic chart.

Basic Installation Sample



Which program is right for you?

When purchasing a new InSight Radar, you have your choice of either Visual Navigation Suite or Nobeltec Admiral. Both are excellent programs and are loaded with features.

Radar Features	VNS	Admiral
Full Screen Radar (PlanView) and Overlay	X	X
Customizable Radar Toolbars (PlanView)	X	X
Off-Centering Radar Mode	X	X
Auto-Ranging, Gain and Sea Clutter	X	X
Guard Zone	X	X
Variable Range Marker (VRM)	X	X
Electronic Bearing Line (EBL)	X	X
Interference Rejection	X	X
Record and Playback	X	X
User Defined Colors	X	X
Cursor Ghosting	X	X
Pulse Control	X	X
Double Speed Mode (requires 24V)		X
Target Tracking (MARPA/AIS)		X
Multi-Monitor Radar Viewing		X
GlassBridge Network Support for Radar		X
Radar Info Panel in NavView		X

Software Features	VNS	Admiral
Real-Time GPS Navigation	X	X
GPS Upload/Download Support	X	X
Quilting for Seamless Charts	X	X
Free Weather Overlay Support	X	X
SplitScreen Mode	X	X
Includes Tides & Currents Software	X	X
Customizable Toolbars and Nav Console	X	X
Course Up/North Up Chart Rotation	X	X
Autopilot Support	X	X
Twilight and Night Vision	X	X
Boundaries and Alarms	X	X
3D Navigator	X	X
Supports Passport Deluxe Data	X	X
Complete AIS Support		X
GlassBridge Network Support		X
Multi-Monitor Support		X
Customizable Vessel Scaling		X
Track Line Coloring Using NMEA Data		X
World Chart Dongle Included		X
NavView User Interface		X
Vessel Management System Included		X
Comprehensive Target Tracking		X

Minimum System Requirements

- Microsoft® Windows® 2000/XP
- 1 GHz Pentium® class processor or better
- 128 MB RAM – 256 MB or more for XP
- 16 MB video card
(Multiple cards required for multi-monitor support)
- 32 bit color SVGA-compatible display
(Minimum Resolution: 800x600)
- TCP/IP network port
- GPS or magnetic heading sensor
- 100 MB available hard disk space
(Additional space required for charts or other data)
- Available serial port for GPS and Heading Sensor connection*
- Available USB/Parallel port for dongle
(Admiral only. Dongle used for international charts, COM port activation and H.O. security)
- 12x or higher CD-ROM drive
- Mouse or other pointing device

* If you do not have an available serial port, a USB to serial adapter may be purchased separately, requiring only an available USB port.

Power Requirements

- 12VDC power source for the InSight Radar or InSight Radar Box 2
- 24VDC if using Double Speed feature within InSight Radars

Important Notice on 2kW Dome

The 2kW Dome varies from other IR2 radar models. If you are purchasing this radar, please be aware of the following differences.

- Uses RS-422 to a Sea Level USB connection device instead of TCP/IP.
- Radar resolution up to 480x480
- Scanline, Radar Presets, Auto Sea, Auto Gain, Double Speed and Off-Centering features are not available.

The IR2 leverages the power of the PC to bring together the world's best navigation software with the familiarity of traditional radar to create the ultimate navigation system. IR2 offers unparalleled chart plotting and radar abilities that provide higher resolution and greater confidence.

IR2 surpasses traditional radar systems through its use of the Nobeltec Visual Navigation Suite™ (VNS™) and Admiral™. These navigation programs make the IR2 easy-to-use, affordable to update and provide functionality not found on other radars. What's more, Jeppesen IR2 models can be connected to a vessel-wide network providing all of your nav stations with radar and chart plotting data for true redundancy.

The new IR2 – bringing together the best of traditional navigation and advanced technology.

For more information visit your local authorized Nobeltec reseller or visit us on the web at www.nobeltec.com.



15160 NW Laidlaw Rd., Suite 100
Portland, Oregon 97229

Toll Free: (800) 946-2877
Global: +1 503-579-1414

www.nobeltec.com



Jeppesen Marine is constantly enhancing product specifications and accessories. To find the most up-to-date information, please visit our website. Specifications subject to change without notice. Trademarks are property of their respective owners. ©2007 Jeppesen Marine, Inc. All rights reserved.

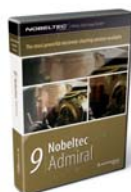
InSight™ Radar 2 (IR2™)

Nobeltec Software

Nobeltec Admiral

IR2 radars are compatible with Nobeltec Admiral and Visual Navigation Suite (VNS).

Below are some of the outstanding features found in Admiral 9.



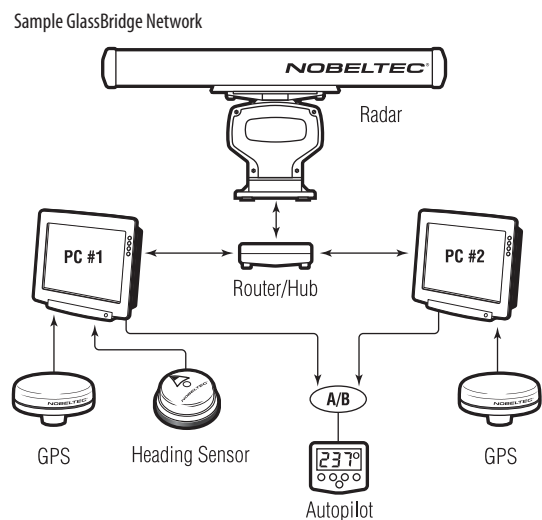
NavView
Admiral's NavView includes easy-to-read information read-outs and large oversized buttons that are perfect for touchscreens and rough water navigation. With NavView, navigating has never been easier!

Full Screen Radar
Using the Full Screen option in Admiral's NavView user interface mode adds an exclusive Radar Information Panel that provides valuable information about your vessel and radar settings.

Multi-Monitor Support
Use a single computer to display Admiral on multiple monitors. Use the View Manager to easily configure each display to your exact specifications, making it easy to know exactly what's going on around your vessel.



GlassBridge Network Support
Instant sharing of NMEA data, radar overlay, nav objects and Passport charts between all computers on the network. Configure multiple computers and install charts only once!



Nobeltec Radar Features

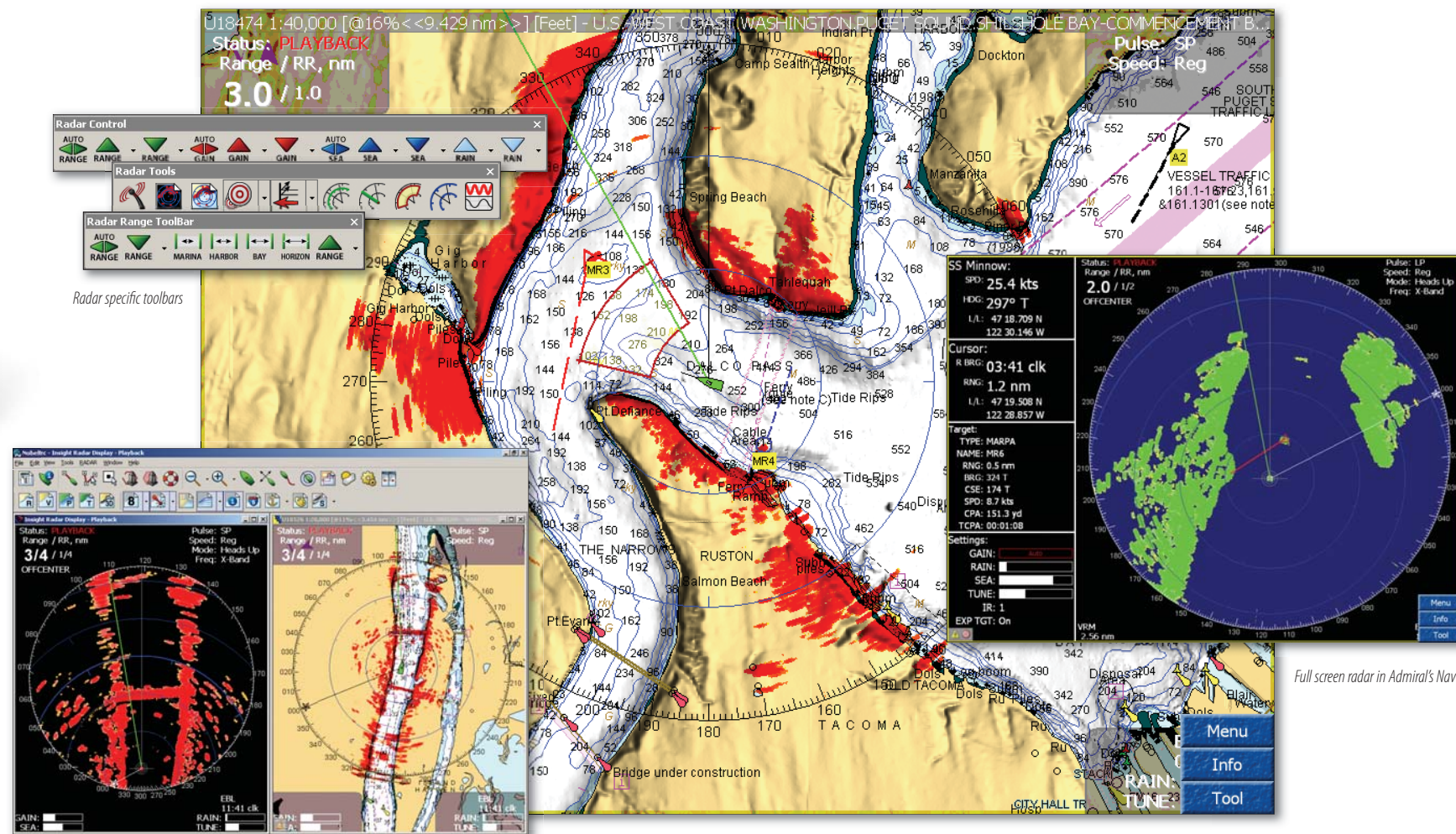
IR2 - Higher Resolution... Greater Confidence™

Nobeltec IR2 changes the way you think about radar systems. IR2 combines a fully functional Nobeltec digital radar with Nobeltec Admiral or VNS software for integration on your laptop or personal computer. Nobeltec IR2 connects directly to your computers and sends a digital video image, processed by revolutionary InSight Technology, for a clearer radar display.

1024 x 1024 Radar Resolution and User-Definable Colors
Using simple controls within the software, the digital radar image on the PC screen is displayed at a resolution of 1024 x 1024 and can be set to your own color specifications.

Guard Zone and Electronic Bearing Lines
InSight Radar provide you with the ability to easily display Guard Zones and Electronic Bearing Lines to help monitor your surroundings for possible dangers. Click and drag for instant adjustment.

Full Screen Radar
The Full Screen option in Admiral's NavView user interface adds an exclusive Radar Information Panel which provides valuable information about your vessel and radar.



SplitScreen InSight radar window off-centered and a chart window with overlay

NavView showing Radar/Chart Overlay with MARPA and AIS targets

Full screen radar in Admiral's NavView

Multiple Viewing Options
Using Visual Navigation Suite or Admiral, you can view your radar image as a stand-alone window, overlaid on top of an electronic chart, or both, using SplitScreen™ mode (shown above).


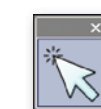



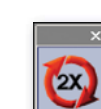
Comprehensive Target Tracking
Admiral clearly displays AIS and Radar targets and warns you of the dangers they pose based on range, bearing and speed. Detect threats based on your own time and range criteria and add precious time to your decision making process.

Easy-to-Read Navigation and Radar Information
When using Admiral's full screen dedicated radar window, all radar information such as Boat Position, Range and Bearing, Speed, Gain, Sea-Clutter and Target Information can be viewed in the Radar Info Panel.

A Sample of Nobeltec's Radar Features

PC Integration

Each InSight Radar model comes loaded with powerful tools that make using the radar simple and easy-to-use. Some of the many powerful new features include:

- 
Auto-Range
With chart overlay, Auto-Range automatically adjusts the range of the radar to match the scale of the chart. As you zoom in and out on the chart, or change the radar range, the two are kept in sync to create a consistent view.
- 
Point and Click Radar
Most IR2 features can be activated using a few simple mouse clicks. For example, MARPA targets can be acquired by simply pointing at the radar target and clicking. Targets can then be monitored by speed, closest point of approach and course.
- 
Pulse Control
InSight Radars automatically adjust the pulse length of the radar to match your range settings, and also allow you to select between long and short pulse lengths to improve the radar image for conditions such as weather.
- 
Auto-Gain and Auto-Sea
Jeppesen Marine allows you to specify Sea Clutter and Gain preset settings for your radar. After these presets are configured, Auto-Gain and Auto-Sea help you maintain a consistent radar image as the radar range changes.
- 
Chart and Radar Orientation
Many radars only allow you to view your radar image in Heads Up. InSight Radars improve upon that tradition and provide you with the ability to view both the chart and radar image and Heads Up, Course Up, Leg Up, North Up, and Off Center with Look Ahead.
- 
Double Speed
IR2 has an option to set the radar antenna rotation to double speed. By doubling the rotation speed, updates occur more frequently to provide speedy and accurate radar images. (Admiral only feature, requires 24V power connection)

