

Nobeltec

Sailing Plus Pack™

Ready, Set, SAIL!

Jeppesen Marine proudly introduces the Windvantage™ Weather Router feature to the popular Sailing Plus Pack. This feature relies on the Route Wizard to make calculations based on the boat's performance characteristics (which are stored in the polar files) and a GRIB weather file. The software then creates a recommendation for the best possible route.

Windvantage Weather Router complements the comprehensive feature pack, containing key cruising and performance tools that will undoubtedly improve your sailing skills. Sailing Plus Pack delivers the right information – when you need it.

Incoming wind and sailing data, whether delivered via Ockam®; B&G®, or strictly from NMEA input, is used to create a total awareness in your Nobeltec display. Import or create a polar file and watch it instantly update with actual on-water data. Next, display on-screen indicators, such as laylines, reverse laylines, and over-the-chart wind indicators. Then display polar targets and actuals as a real number or percentages for instant performance verification. You can also measure data and performance using analysis tools that are built into Nobeltec's exclusive Strip Chart technology.



- ~ Windvantage™ Weather Router
- ~ Polar File Import
- ~ 50 Pre-Installed Polars from U.S. Sailing®
- ~ Real-time Data on Polar Display
- ~ Strip Charts for Trending and Analysis
- ~ Laylines and Wind Indicators
- ~ Track Line Coloring for Instant Investigation

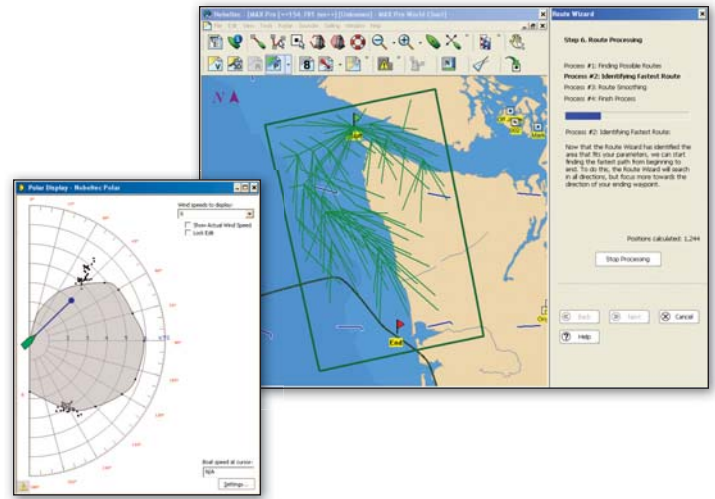


Jeppesen is a Boeing Company

 **JEPPESEN**
Marine

nobeltec.com

Sailing Plus Pack™



Sailing Plus Pack is sold separately and requires the purchase of VNS or Admiral version 9 or MAX Pro versions. It contains the following features:

Windvantage™ Weather Router

Use the Windvantage™ Weather Router feature to create a recommendation for the best route based on the predicted and current wind and weather data in addition to your boat's performance characteristics, which are stored in the polar files.

Complete Polar Management

Import a pre-existing polar file, create one from scratch, or use one of the 50 hand-picked U.S. Sailing® polar files included. Manipulate the polar within the remarkable Polar Display window, using either the mouse or keyboard. As real time data is recorded, compare it instantly to predicted values, right in the Polar Display.

Laylines and Wind Indicators

Instantly toggle laylines and wind indicators on and off and fully customize their appearance over the chart window.

NavInfo Panel and Strip Charts

Configure and customize the display of over 50 different data types for meaningful on-screen representation, including exclusive sailing data, such as heel, leeway, and set/drift information. Simply double-click a value to switch to Strip Chart (histogram) display and easily measure averages over time!

External Instrument Support

Connect B&G or Ockam instruments to your Nobeltec Navigation Software and Sailing Plus Pack can ingest this proprietary information for internal calculators and on-screen display or send wind and other navigation information using NMEA format.

CONTACT US

Sales, Customer Service & Technical Support: For sales or product information, please contact us at:

North & South America

Support: (8am – 9pm ET)
Toll-Free: (800) 732-2800
Global: +1 303 328 6983
Email: marine.support@jeppesen.com
Sales: (11am – 8pm ET)
Toll-Free: (800) 946-2877
Fax: +1 503 579 5095
Email: sales@jeppesen.com

Europe, Middle East, Africa

Support: (8am – 5pm CET)
Global: +49 6102 50 8171
Email: marine.support@jeppesen.com
Sales: (8am – 5pm CET)
Tel: +44 1293 842674
Fax: +1 503 579 5095
Email: sales@jeppesen.com

Asia, Pacific, Australia

Support: (8am – 5:30 pm AET)
Global: +61 2 9808 6200
Email: cmapinfo@c-map.com.au
Sales: (8:30am – 5:30pm AET)
Global: +61 2 9808 6200
Fax: +61 2 9808 6233
Email: sales@jeppesen.com

Visit Our Website: www.nobeltec.com

Jeppesen Marine is continuously enhancing product specifications and accessories. To find the most up-to-date information, please visit our website. Specifications subject to change without notice. Trademarks are property of their respective owners.
©2008 Jeppesen Marine, Inc. All rights reserved.

Minimum System Requirements*

- Windows® XP Home/Professional or Vista™ †
- CPU: 1 GHz (Dual Core/ Dual Processor is supported)
- Memory: 1 GB RAM
- Hard Drive Space: 500 MB for NNS programs, plus 20 GB for charts and supplemental data
- Display: 1024x768 resolution, 32-bit color video
- Video Card: 64 MB RAM
- DVD Drive
- Serial or USB ports for GPS, radar, etc.
- USB port: At least one USB port for Hardware Key
- Mouse or other pointing device

Recommended System Requirements*

- CPU: 2 GHz
- Memory: 2 GB RAM
- Video Card: 256 MB RAM & OpenGL for each monitor
- Internet access for registration and to purchase software add-ons and charts

* Higher system requirements may be appropriate if multiple advanced features are used concurrently.

† Latest Service Pack may be required for Technical Support troubleshooting

US Sailing®

Jeppesen Marine's polars are official polar data from US Sailing. While US Sailing offers specific polars on a boat-by-boat basis, we have included some excellent starting points for a variety of boats. To contact US Sailing, please call 1-800-USSAIL1