



TSUNAMIS
NAVIGATOR

**A WORLD *of* CHARTS
on ONE CD**



 **TRANSAS nautic**
CHARTING FOR THE WORLD



Transas Nautic, based in Portsmouth UK, are the leisure division of the **Transas Group**.

Entirely dedicated to the leisure marine market **Transas Nautic** are able to offer high quality PC based navigation and weather forecast software in addition to one of the worlds largest catalogues of vector charts.



The introduction of this dynamic company to the **Transas Group** back in 1997 came at a time when the use of charting software on personal computers by leisure yachtsman and power boaters was on the increase. Today, we are one of the world's largest producers of PC based navigation systems and electronic vectorised charts. This is backed with a continually increasing number of distributors worldwide encompassing the USA, UK, Europe, Africa, Far East and the Middle East.



Transas Nautic offer a range of products designed for the serious boater whether coastal cruising or offshore racing. From our **Weather Wizard** through to **NaviGator PRO** you can be assured of the highest standards expected from a quality assured company.



Transas Vector Charts

The in-house production of vector electronic charts is one of Transas Nautic's many areas of expertise.

To-date, the Transas World Collection consists of more than 7000 charts, all digitised to the highest quality and level of accuracy, produced from paper chart data published by all the major national Hydrographic Offices. The worldwide coverage achieved by the Transas Chart Collection, secures safe navigation in practically any region across the globe.

The Chart Production Department was set up at Transas in the late 80s. The digitalization process used fully complies with international quality standards set out by ISO:9001. To achieve this level of quality, only qualified hydrographers and highly professional engineers, all with

sufficient seagoing experience, are engaged in the Chart Production processes.

Who Uses Our Charts

Transas electronic charts are widely recognised on the international market. Transas charts have not only been supplied to thousands of leisure boaters but to naval and coast guard fleets of over 30 countries including UK, Sweden, USA, France and Russia to name but a few, as well as to over 100 shipping lines.

Advanced Technology

The ability to fully record all navigational information contained in original paper charts to create accurate electronic chart copies, is one of the main advantages of the Transas technology. Our charts provide navigators worldwide, with the complete set of information they might require during a voyage or for route planning.

An exhaustive supply of point object

information, which is provided with our charts, allows the navigator to minimize the time required for decision making while at sea. A special technology used for digitising lighthouse positions, allows their sectors and nominal visibility to be high-lighted on the electronic chart.

Updates and Innovation

Transas electronic chart information is constantly being updated with data received from various sources, including Admiralty Lists of Lights and Fog Signals and Pilot Book data, which means electronic charts provide even more value to seafarers as compared to their paper counterparts.

The most modern digitising and vectorising technology is used for Transas chart production. The accuracy of all linear, point and square objects is fully compliant with the information contained in the respective paper charts and satisfies all international requirements set out for electronic chart production.

TSUNAMIS NAVIGATOR

Tsunamis NaviGator represents the next generation of powerful PC based navigation systems. Specifically designed for the leisure sailor or power boater, this system is both comprehensive and easy to use.

Tsunamis NaviGator is available in two version, **Standard** and **PRO**, both using the highly regarded Transas vector charts offering true world wide coverage.

NaviGator Standard

Vector chart presentation –

Transas vector charts are a layered digital image of the original paper chart. They offer the same information as their paper counterpart but have a number of vital benefits.

When zooming into to a Transas vector chart the only thing that is enlarged is the “geographical mass”, all the text, buoying and navigational symbols remain the same size. This ensures that there is no distortion and offers incredible clarity making chart viewing easier.

Seamless zooming –

When zooming and panning around your chart, *Tsunamis NaviGator* will automatically select the best chart you have for the area you wish to view. This selection is based on the original chart scale.

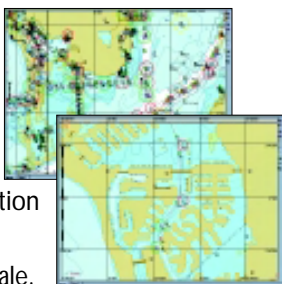


Chart Screens –

Tsunamis NaviGator allows you to select either full screen or split screen chart display with the addition of being able to set the instrument side panel to “auto hide”. This makes better use of your screen size giving a greater chart viewing area.

The Split Screen option allows two charts to be displayed side by side enabling the user to view their overall route whilst monitoring their current position in detail.

In addition the screen image may be adjusted for day, dusk and night to optimise the viewed image for different lighting conditions.

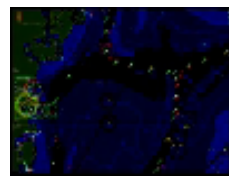
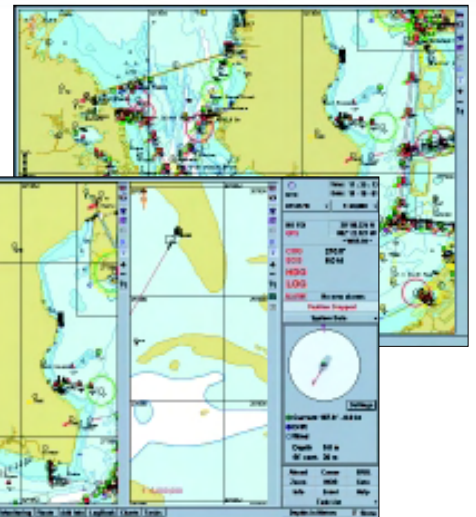


Chart Rotation –

Charts may be displayed in one of three ways, north up, head up, or course up. When a chart is rotated chart text will not be effected, ensuring that it remains legible.



A World of Charts on One CD –

Each *NaviGator* CD contains our full catalogue of around 7500 charts. These charts can be accessed and installed on your PC by using a simple unlock code that can be supplied by your dealer. This means that no matter where you are in the world, you can have instant access to the additional charts you require.



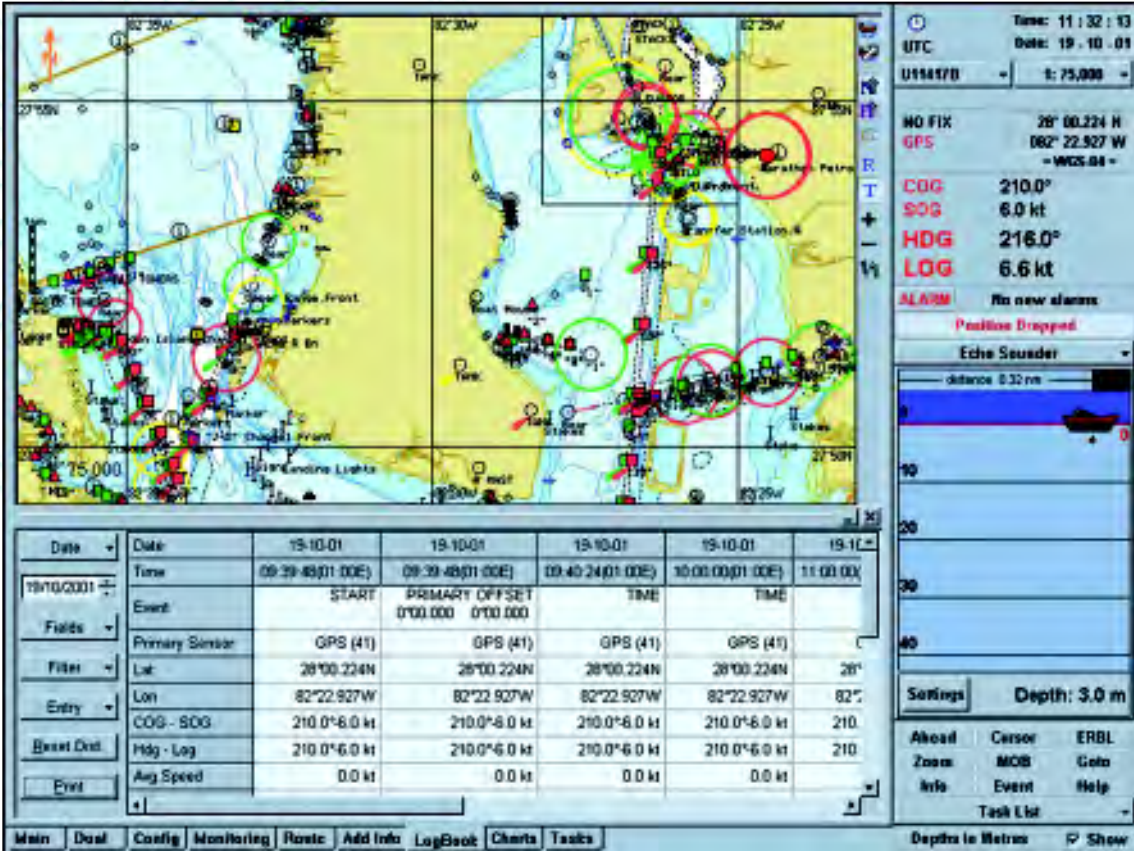
Picture: “Ryan’s Daughter” – Trader 575 Signature

A powerful navigation &



Instrument side panel –

The side panel is used to display a range of information from your instruments and to give details on your route. It also allows access to other functions and set up options. All displays in this panel may be “floated” on to the chart window and re-docked to the panel as required.



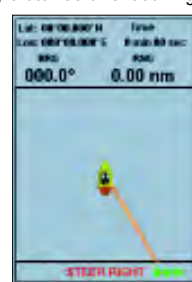
- ◀ Date and time display
- ◀ Displayed chart and chart scale
- ◀ GPS position status, Lat / Long
- ◀ Instrument data. COG, SOG, Heading, Log speed
- ◀ Alarm status. Indicating any alarms and the reasons for the alert
- ◀ Information display. This may be changed to show a range of information (see facing page)
- ◀ Menu Functions (see below)

- Ahead** keeps your vessel position on the screen and enables auto scroll
- Zoom** activate the zoom cross hairs on the chart window enabling a zoom box to be created
- Info** allows chart information to be displayed such as the name, colour and position of a buoy and it's light sequence.
- Cursor** function enables chart scrolling and centring. This function also gives Lat and Long of the cursor cross hairs
- MOB** opens a rolling road giving Lat/Long of the MOB position, distance and bearing to that point and elapsed time from when the functions was activated. The rolling road also gives steering instructions to the MOB target.

- Event** makes an entry in the log, recording your position, course and speed.
- ERBL** opens a data box giving range and bearing to and from your vessel and an object or between two objects.
- Goto** creates a quick route using your current position as the start point.



Picture: Clipper Ventures Reflex 38



Picture: "Ille d'Esprit" – Trader 575 Signature

charting system ...

Information Displays –

These displays can be “floated” on to the chart window and re-docked to the panel as required.

Route Data ▶

giving details about the active route plan



▲ Environment Data

allows you to control the display of tidal and weather information



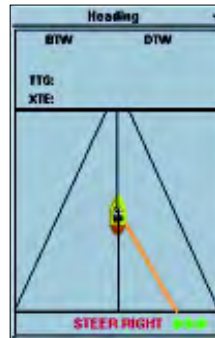
▲ System Data

graphically displays wind direction, heading, drift and current information in relation to the vessel



▲ Satellite Status

indicating the number of satellites being tracked by the GPS unit



▲ Heading

displays a rolling road giving steering information in relation to your next waypoint



▲ Echo Sounder

graphically displays depth information allowing for your vessels draught

Instrument connectivity

Tsunamis NaviGator will interface with your GPS and up to eight other instruments using NMEA 0183 protocol. This will display your vessel position on the chart and repeat COG, SOG and position (Lat/Long) in the side panel, in addition this GPS data will be recorded in the log.

All other instrument data (depth, log speed, wind, temperature, compass, etc) will be displayed in the side panel.

User Defined Alarms

Tsunamis NaviGator Standard offers a number of alarm options, these included GPS failure, XTE/off course, and waypoint approach. The reason for an alarm sounding is displayed in the side panel where the warning may be acknowledged and silenced.

Task List Menu

This access a range of functions and opens relevant task windows. When not being used the task windows may be minimised at the bottom of the chart screen and accessed by clicking on the relevant tab.



Config access general screen settings, weather settings and time zones

Monitoring controls the vessel position display, route monitoring functions and alarm zone settings.

Route is used when creating and planning a route.

Add Info displays the tools required to create chart overlays allowing additional data to be added to your charts

Log Book displays recorded log data that may also be printed. This function also allows additional notes to be entered in the log.

Charts displays a complete list of all the charts you have installed allowing rapid chart selection. This function also enables chart layers to be turned off and controls the way the charts are displayed

Tasks accesses SAR functions, tidal height data and 3D chart display.

System Requirements

- Operating System: Windows 98, 2000, NT or XP
- PC specification: Pentium 300 MHz processor or better
- Screen res. 1024 x 768 or better
- 64mb RAM or better
- CD ROM
- Minimum of 700mb HDD storage

Picture: S/Y "Lilla" – CNB 76

Tsunamis NaviGator PRO

This advanced system has been designed to offer greater functionality to meet the needs of the more demanding yachtsman or power boater. This system is particularly suitable for "bluewater" sailors, large motor yachts and those racing offshore.

Tsunamis NaviGator PRO contains all the features of *NaviGator* plus those detailed below.

Chart Overlays –

Symbols, lines, text and shaded areas may be added to the charts. This allows the user to customise charts to indicate favourite anchorages, fishing spots or dive sites. This function also allows image or text files to be attached. These could include pilotage photos or notes about a marina or favourite restaurant.

Instrument Logging –

Tsunamis NaviGator PRO will log information from all instruments that are connected to the system. This data can be viewed, printed and your passage replayed using the Playback function.

Autopilot control –

Tsunamis NaviGator PRO will interface with a NMEA compatible autopilot. This will enable route waypoint information to be sent to the autopilot each time a route is calculated.

ARPA Radar Interface –

Tsunamis NaviGator PRO will interface with ARPA radar. This will enable moving targets to be displayed on the chart.

Navtex Interface –

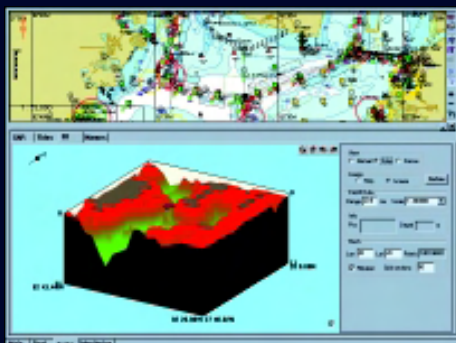
This enables the *Transas Navtex* antenna to be connected to your PC and messages displayed on the screen. Where a lat/long is given the message will be displayed in the correct location on the chart.

Search & Rescue –

The system includes a SAR feature allowing standard search patterns to be created and activated.

3D chart imaging –

This function will generate a 3 dimensional image of the active chart area including your vessels position. This image may be rotated on both horizontal and vertical axis.



Tsunamis NaviGator features

	NAVIGATOR STANDARD	NAVIGATOR PRO
Vector chart presentation	✓	✓
Day/dusk/night display settings	✓	✓
Full chart zoom and pan capability	✓	✓
Chart autoload	✓	✓
Chart auto scroll	✓	✓
Range and bearing calculation	✓	✓
Vector chart layer control	✓	✓
Chart symbol information display	✓	✓
Route planning	✓	✓
Route tidal calculations (CTS)*		✓
SAR function		✓
Route checking function		✓
Port information		✓
Sensor alarm	✓	✓
XTE / off course alarm	✓	✓
Waypoint guard zone alarm / danger approach	✓	✓
GPS interface	✓	✓
Echo Sounder interface	✓	✓
Gyro compass interface		✓
Magnetic compass interface		✓
Log Speed interface		✓
Wind instrument interface	✓	✓
Drift and temperature interface		✓
Autopilot interface		✓
Navtex interface**		✓
Playback feature		✓
Instrument data logging		✓
Log Book facility		✓
Tides & Currents module	Optional	Optional
3D chart display		✓
Chart head up display	✓	✓
Chart course up display	✓	✓
Weather Forecast manager***	Optional	✓
Weather forecast chart overlay***	Optional	✓
ARPA radar interface		✓

* Requires Tides & Currents Module

** Suitable Navtex required with RS232 printer output

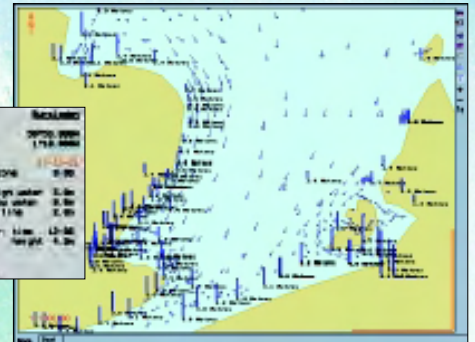
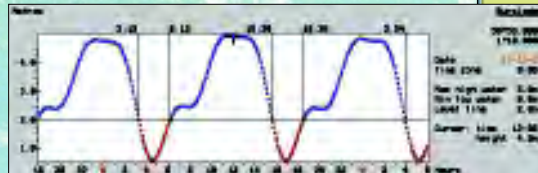
*** Requires Weather Wizard Option

TSUNAMIS NAVIGATOR

Optional Features

Tides & Currents

This adds world wide tidal stream, ocean current and tidal height information to the system. This add on module also activates the tidal passage planning function allowing course to steer calculations to be produced when route planning.



Weather Wizard

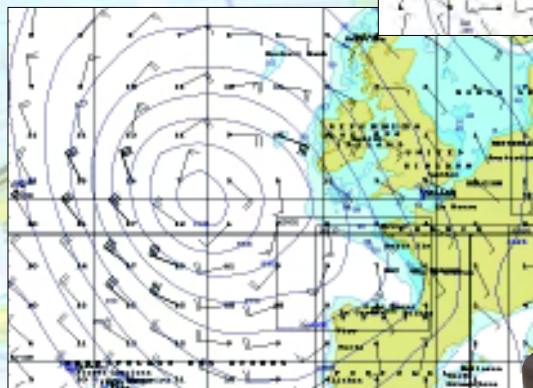
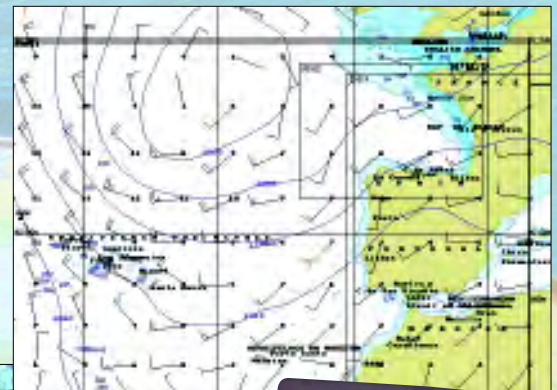
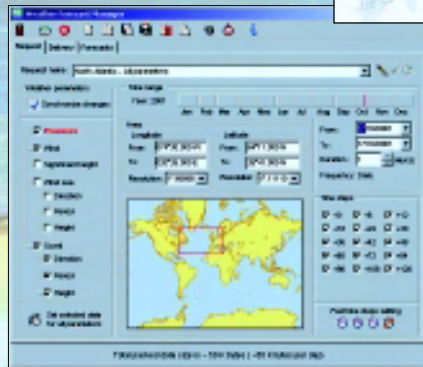
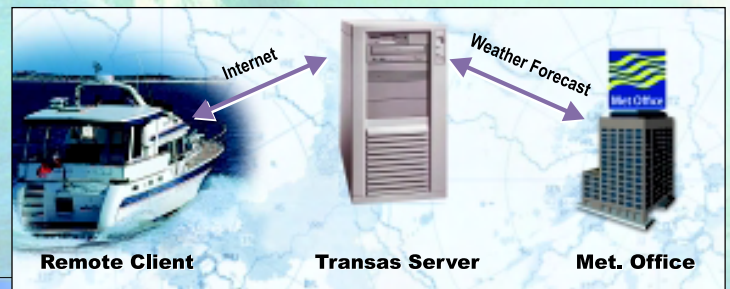
MORE THAN JUST A WEATHER FORECASTING PACKAGE

Bringing you up to 5 day weather forecasts for anywhere in the world via your e-mail connection.

A simple to use and affordable weather forecast system using e-mail to access high quality Met Office data which can be displayed on an electronic chart. The forecast that is received is completely user defined, by using the Forecast manager to establish the area you wish to be covered and the parameters to be included in the forecast (pressure, wind, significant height, wind sea and swell).

Requested forecast information is e-mailed to you and then automatically transferred from your IN box to be displayed.

Weather Wizard is built in to Tsunamis NaviGator or is available as a stand-alone system.



Weather Wizard System Requirements

- Operating System: Windows 98, 2000 or NT
- Microsoft Express or Outlook



"Pindar" – 60' Tri
Photo: Thierry Martinez



"Moonlight Lady" – Trader 475
Photo: Toby Chappell



Authorised Dealer

02-02



Transas Nautic, Sea Hawk, Bilton Way, Off Airport Service Road, Portsmouth PO3 5JN, UK
Tel: +44(0) 23-92-674016 Fax: +44(0) 23-92-674046
E-mail: Dataco@transas.co.uk Web Site: <http://www.transasnautic.com>

Use of the Tsunamis NaviGator operating system software, charts and all material printed or otherwise are subject to the licence agreement contained in the package.
Copyright © Transas 1991-2001. All rights reserved.