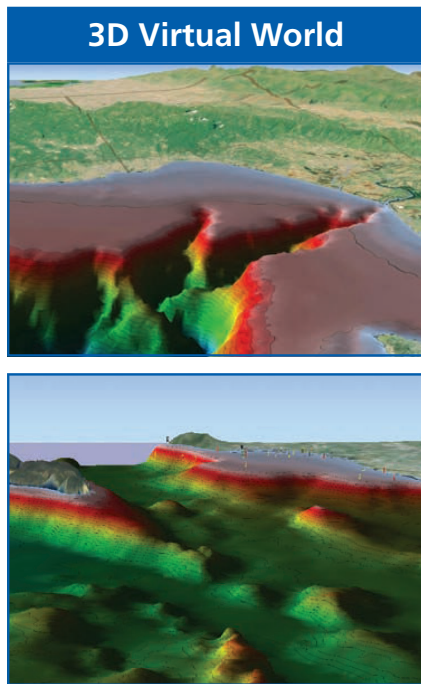


MAX Pro Features

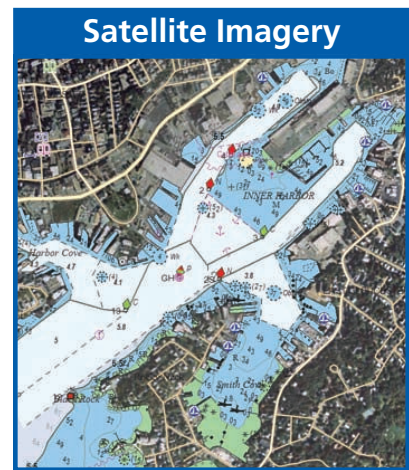
The latest evolution in C-Map charting technology from Jeppesen Marine is an advanced electronic charting standard, designed for high performance navigation systems. MAX Pro takes electronic charting to new dimensions, guaranteeing an exclusive navigation experience to the most demanding navigators.

MAX Pro is loaded with professional navigation features like: 3D Virtual World Display, Satellite Imagery Overlay, Quick Sync Updating, Photos & Diagrams, Tides & Currents, Fishing Contour Data and more.

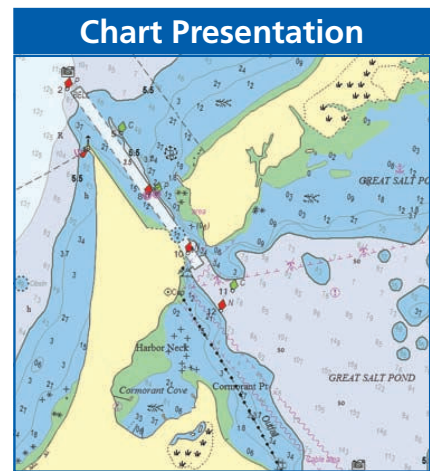


Provides a powerful and dynamic 3D visualization of the seabed. Extensive bathymetry, land elevation data and satellite/aerial imagery are carefully integrated to create a truly stunning "virtual world" display of the navigation scenario.

MAX Pro Features



Official Data Source - Satellite Overlay: Superb presentation of satellite/aerial imagery is displayed directly on the electronic chart.

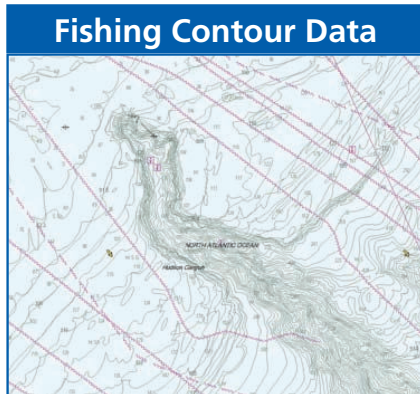


Looks and feels like a paper chart, but with the power of a vector chart! MAX Pro is premium chart technology for the light marine market.

MAX Pro Features

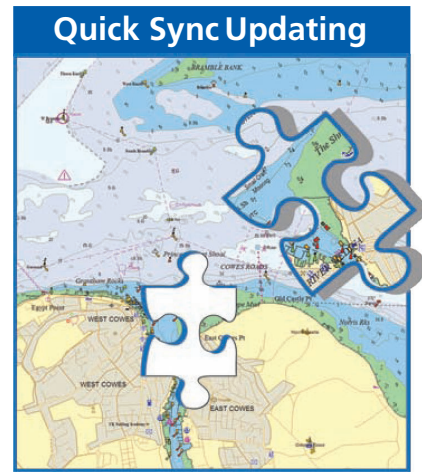


MAX Pro incorporates a wealth of value-added data, including C-Map's renowned C-Marina port database (with high-resolution photos of ports and marinas), a global tidal database, land elevations, satellite and aerial photos.



Bathymetric contour data comes alive with MAX Pro. Fishermen have the ability to turn on/off contour charts displaying the highest available detail of offshore bottom structure including canyons, seamounts, ridges and other seabed features.

MAX Pro Features



Navigators can download official updates, including data and NTMs (Notices To Mariners) at any time. Updates are quickly downloaded and automatically applied via the Internet or Email.



Tidal Heights and Current Flow Database: Tidal prediction graphs as well as current direction, speed and strength are depicted on the chart.